

October 2015

THE WARNER MEMO

THE MONTHLY NEWSLETTER OF WARNER MEMORIAL PRESBYTERIAN CHURCH



**Warner Memorial “Shepherd’s Garden” –
Growing Produce for Nearby Community Needs**

Warner Memorial Presbyterian Church

www.warnermemorial.org

[October Online Calendar](#)

WORSHIPING TOGETHER IN OCTOBER

Sunday, October 4

World Communion Sunday

Psalm 8; Mark 10:13-16

“The Vulnerable”

Sunday, October 11

Hebrews 4:12-16; Mark 10:17-31

“The Invulnerable”

Sunday, October 18

Rev. Dottie LaPenta, Chair of National Capital Presbytery’s Leadership Council, will be preaching

Sunday, October 25

Reformation Sunday

Isaiah 53:4-9; Mark 10:35-45

“Glory”

WARNER WELCOMING STATEMENT

All people are of sacred worth and God loves everyone without exception. We welcome all people into our worship, fellowship, membership, and leadership. Believers, seekers, and doubters are all welcome at Warner. We are an affirming and supportive spiritual community that celebrates God’s infinite love, wisdom, and grace through worship, music, education, mission, and fellowship. Though we are all unique, we are united in loving and praising God and in loving each other. We are committed to communing together in such a way that we give witness to Christ’s sacrificial life, redeeming death, and glorious resurrection. Loved and accepted by God, our congregation offers love and acceptance to all.

“A little bit of mercy makes the world less cold and more just.”

-- Pope Francis

FROM THE PASTOR

Dear members and friends,

When we think of horse racing here in Maryland, Pimlico and the Preakness dominates the focus. But a kind of horse racing that at least initially involved churches is steeplechase. This kind of racing began in 18th century Ireland as a cross-country race with a church steeple used as the finish line because it could be seen from a distance. These races now have set courses that include ditch and fence obstacles over which the horse, encouraged by its rider, must leap. The communication between rider and horse is an amazing thing. There are occasions, however, when the horse senses a lack of faith from the rider as they approach such a barrier, that the horse decides at the last second that it can't make it over. When that happens, frequently the horse stops so suddenly that the rider is often thrown. In describing this sport, one author described what is required of the riders, saying that as they approach each hurdle, they must first throw their hearts over the barrier, and then the horse will go along too. When the hearts of horse and rider work together, it is among the most graceful things to ever be observed.

And when our hearts and God's heart work together, it is among the most grace-filled things to ever be observed. We have obstacles that by every good work and word we can leap over, or at least crawl over if we have the heart to do so. God wants to give us the comforted and strengthened hearts to make it through the race before us. We are not chasing steeples; we simply want light from even higher than the steeple to be shining through us.

Thankful for faithful and giving hearts, Kirby Lawrence Hill

- - - - -

NOTE: We celebrate that the sale of the grassy lot at 3905 Prospect Street is now completed and we anticipate being able to use those proceeds, combined with capital campaign giving, to close out our construction loan early. We ask that those who pledged to the capital campaign through the end of 2015 to keep giving as funding will be needed for a new curb cut and driveway to access our overflow parking area. Thanks for all who have made these accomplishments possible.

CHRISTIAN EDUCATION

FAITH IN ACTION—SERVING THE COMMUNITY’S NEEDS

On a recent school holiday, young people from our congregation including Charlotte Cook, Ben Cope, Jordan Hill, Andrei Pinkus and Simon Winter – led by Janet Tennent and



Jan Moody – delivered food from the Warner food barrel to Mid County United Ministries (MUM) in Wheaton. While at MUM, Director Larry White told us about the agency’s mission to help people in crisis in the Wheaton, Kensington, and Aspen Hill communities with

food, medicine, eviction prevention and utilities. The youth stocked shelves in the food pantry and assisted clients who came for food from the pantry. We witnessed the ongoing need and effort to support families in need in our own community.

ONE POTATO, TWO POTATO, THREE POTATO, FOUR....

Throughout the summer June Eakin, Susan Bresee, and other volunteers have faithfully tended Shepherd’s Garden and delivered the produce from the garden to Shepherd’s Table in Silver Spring. When it came time to harvest potatoes, Susan recruited the children’s Sunday school class to help with the digging (*see photo on cover*). After working in the garden, the children made a potato train to help them count the nearly 40 potatoes that had been dug up. Later, during worship, one of the children led a prayer of thanksgiving for the many ways God provides food for the hungry.



PARENTS' NIGHT OUT

The Christian Education Commission will host a Parents' Night Out on **Thursday, October 15**, from 6:00 to 8:00 PM at Warner Church in room 4. The event is designed for children aged four to ten. Activities for the evening include: a light supper, drama games, and fall crafts. Cost: a can of food for the Warner Food Barrel to help the MUM pantry.



“SHOUT OUT” TO YOUNG ADULTS

Lena Aspiras and others are interested in coordinating activities for young adults this fall. A calendar of events designed with both service and social events has been started. The plan is simple: to build relationships and experiences with each other and the community.

For more information, e-mail Lena at lilulena@hotmail.com.

-- Jan Moody, Director of Christian Education

COMMUNITY

PEACE & GLOBAL WITNESS OFFERING

Peace be unto you and “Peace be to the whole community, and love with faith”

- Ephesians 6:23

It is always with joy that the Warner Commission to the Community opens the package that arrives from PC (USA) each fall with materials to help us launch the collection of the special offering, which used to be called simply the **Peacemaking Offering** but is now called the **Peace & Global Witness Offering**.

We eagerly absorb the new insights that have been presented concerning Peacemaking in the *Leader's Guide*. There is always a new Bible verse, a beautiful new poster, which we display on the Commission to the Community bulletin board, inserts for our bulletin, and a new opportunity for each of us to grow in our understanding of what it means to be peacemakers in a troubled world.



SPECIAL OFFERINGS
PEACE & GLOBAL WITNESS

The Presbyterian commitment to peacemaking was established by our denomination in 1980. We at Warner have long

been contributing to this special offering, which we receive on World Communion Sunday and continue to accept throughout October. To make a contribution to this offering, please make your check payable to WMPC and be sure to indicate on the subject line that it is to be used for the *Peace & Global Witness Offering* – or just the word *Peacemaking* will do. Envelopes are in the pews for you to use when you place your offering in the collection plate.

There are other ways to contribute, either by texting or by sending in your contribution directly to PC (USA) – or if you wish you can send your contribution electronically as directed on the Warner Website. However, if you contribute through Warner, we will have a record of our church's response each year and, because churches are instructed to keep 25% of the total we collect to use at our discretion for peacemaking, we will know how much that is. At the end we send 75% to PC (USA) via Presbytery, which then is also aware of Warner's contribution.

As we have in recent years, we divide our 25% among three organizations:

- * Interfaith Conference of Metropolitan Washington fosters dialogue among persons and peoples with differing beliefs in the DC area. The IFC holds workshops and seminars ... and each year they put on a concert to celebrate the diverse cultures that exist in our nearby community. When next we have tickets, consider joining this celebration of diversity.
- * The Family Tree - an organization headquartered in Baltimore but serving all of Maryland, has a "Stress Line" which anyone in a parenting crisis can call at any hour of the day or night to talk with someone who will offer guidance through a difficult time. The Family Tree also gives classes in parenting that teach how to discipline effectively without resorting to physical or verbal abuse.
- * Jerusalem International YMCA over the years has become increasingly inclusive. It offers programs open to Christian, Jewish, and Muslim children, youth, and adults where they can come together to play and learn, *with no politics involved.*

Again, Peace be unto you and "Peace be to the whole community, and love with faith." - Ephesians 6:23

-- Ina Rae Kramer, Commission to the Community

WARNER'S "TWO CENTS-A-MEAL" PROGRAM

We collect and count this offering on the third Sunday of every month. On September 20, your donations totaled \$180.50 in coins, currency and checks. Our discretionary 40% goes to help the "Farmers and Hunters Feeding the Hungry" program. We look for others to help us with counting this collection every month. Please stop by the Common Room-library (or the choir room) after worship and fellowship on October 18. Thank you for your donations and support of this ministry!

-- Ann

Rakow

SUMMARY OF PRESBYTERY MEETING – QUILL OF THE STATED CLERK

National Capital Presbytery (NCP) met on September 22 at National Presbyterian Church. During the meeting, NCP: worshipped together aided by beautiful music sung by Elder Doris Mabrey; heard a thought-provoking sermon, "Playing God," from the Rev. JC Austin; welcomed the Rev. Eric Peltz (Associate, Chevy Chase) and the Rev. Scott Ramsey (Interim, Lewinsville) to the presbytery. NCP also presented a certificate to the Rev. Dottie LaPenta showing she was honorably retired with all the rights and privileges pertaining thereto.

Presbytery also voted to include parish associates and Christian Educators as among those eligible to attend the parish pastor retreats; approved the 2016 Operating Budget of \$1,045,515; received for first reading the 2016 Mission Budget of \$804,502. (The Mission Budget will be voted on at the November 17 meeting.)

NCP approved a policy that expenditures by the Presbytery for real estate consulting and similar expenses related to due diligence work in connection with church redevelopment proposals be reimbursed to the Presbytery from the first proceeds realized from the sale, lease, or redevelopment of the property. It was clarified at the meeting that this policy applies to churches that remain in existence.

--Pastor Kirby Lawrence Hill

"Now there are varieties of gifts, but the same Spirit; and there are varieties of services, but the same Lord..." 1 Corinthians 12:4-5

ENVIRONMENTAL STEWARDSHIP

ASSEMBLY UPDATE:

WARNER SESSION RECOMMENDS OVERTURE FOR PC (USA) TO DIVEST FROM FOSSIL FUEL COMPANIES

As an Earth Care Congregation, Warner Memorial has long recognized the threat that climate change poses to our stewardship of God's Earth. Most of the changes we have seen in the earth's climate and almost all of the future changes are the result of burning of fossil fuels. Climate change is a problem that is already impacting our lives, but even more so the lives of the poor and those in developing countries who cannot finance the costs of adaptation. Additionally, scientists have shown that burning all of the known reserves of fossil fuel will result in runaway warming. The remedy is to leave most of these reserves in the ground.

We are realizing the need to move our denomination's investments out of fossil fuel companies. This realization comes from three main factors:

1. We are all responsible for the heat-trapping gases causing climate change. When we invest in fossil fuel companies, we encourage their continued uncontrolled extraction of fossil fuels. We are also supporting these companies' efforts to intentionally cast doubt on climate science and to delay political action to address the climate problem.
2. When we invest in fossil fuel companies, we are profiting from the harm they bring to the poor around the world and even the loss of their very land. To quote the World Council of Churches: "The logic of divestment couldn't be simpler: if it's wrong to wreck the climate, it's wrong to profit from that wreckage."
3. Finally, the stock value of fossil fuel companies is dependent not only on the amount of fossil fuels they extract from the ground but even more importantly on their proven reserves – the amount they can promise to extract in the future. Since more than half of their reserves must be left in the ground to prevent catastrophic climate change, such companies' stocks are significantly overvalued, making them poor long-term investments that are due to be dramatically devalued.

EARTH CARE OVERTURE TO PC (USA) GENERAL ASSEMBLY

For all of these reasons, there is a major effort underway around the world to divest from fossil fuel companies, or remove investments from industries such as oil, natural gas and coal. Schools, private foundations, pension funds, and individuals have taken up the call to divest. One year ago these investors had committed to remove \$52 billion in investments from fossil fuel companies. Now, divestment commitments exceed \$2.6 trillion, including divestment by the Episcopalians, Unitarians, Lutherans, Anglicans, Quakers, Methodists, the United Church of Christ, and the Churches of England and Scotland.



There was an effort to pass an overture at the 2014 General Assembly (GA) calling upon the PC(USA) Board of Pensions and the Presbyterian Church (USA) Foundation to divest from fossil fuel companies. The 221st GA discussed and amended that overture but referred it to committee for reconsideration at the 222nd GA in 2016.

Led by the denominational interest group Fossil Free PC (USA), presbyteries across the country are now considering the updated overture, sharing a common recommendation text. Earlier this month, the San Francisco Presbytery became the first to pass this overture, effectively making it a motion to GA. At its September meeting, Warner's session took a momentous action to recommend this overture to the National Capital Presbytery for consideration at an upcoming Presbytery meeting. The next presbytery that passes the overture effectively provides a second to the motion; bringing it up for consideration at GA. Twelve presbyteries passed the overture to the 221st GA.

During three Sundays in October, Warner's Environmental Stewardship Team will be leading adult Sunday School classes on actions each person can take now to care for creation. The first class, on **October 18th**, will interpret this overture to the congregation and provide information on socially responsible investing, including divestment from fossil fuel companies.

-- Mark Eakin

BOARD OF DEACONS

In early September, the deacons were busy kicking-off the fall season with two special activities in a week. On the 7th, we assisted Mid-County United Ministries with their booth at the Kensington Labor Day parade, collecting 781 pounds of groceries for their food pantry. Then on Sunday, the 13th, the deacons hosted the church picnic. The weather cleared off in time for the festivities, and a good time was had by all. Special thanks go to all deacons for their hard work. Thanks also go to the McGlades for lending us their grill. A special “shout-out” to deacon husbands Ty Bragg, Kirby Lawrence Hill, and Scott Bunn... ..Ty for his grilling help and table set-up, Kirby and Scott for also helping with the tables. The deacons would also like to thank Geoff Cope and the youth/children of the church for their assistance.



Have you missed seeing our homebound members at church on Sundays? To that end, the deacons are coordinating transportation for these important members of our congregation... ..BUT WE NEED YOUR HELP! If you would be willing to provide transportation on an OCCASIONAL basis or be willing to help with the coordination of this project, please contact Elizabeth Bunn (dollface0320@gmail.com). Additionally, if you are in need of transportation or know of someone who does, please contact any deacon. (We will be soon trying to have a sign-up sheet available at Fellowship Hours).

In November, the deacons will be once again coordinating the preparation and serving Saturday dinners at Rainbow Place, a women’s shelter at Rockville Presbyterian Church. Look to upcoming Sunday bulletins for notices on how you can be “the first in your pew” to sign-up to prepare a dish or serve!

Stay tuned to the next MEMO!

-- Elizabeth Bunn, Moderator

Please support the Warner Memorial **Deacons’ Fund** by contributing on the first Sunday of each month. You may use the special envelopes in the pew racks. Thank you for helping our neighbors in need.

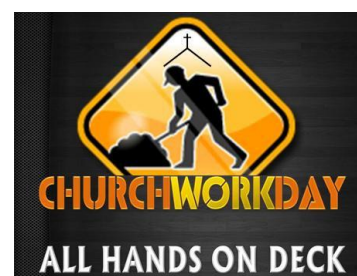
Every day of the month, you can help Mid-County United Ministries’ (MUM) food pantry in Wheaton by bringing in cans and packages of non-perishable food for our barrel in the church narthex. **Thank you!**

BUILDING & GROUNDS

The Commission on Building and Grounds has completed supervision of the repairs from the plumbing flood last winter and is now embarking on the next major project of heating replacement for the ground floor. Unfortunately, it was discovered over the summer that the remaining loops of the radiant heat were leaking and it was decided to abandon them. This fall, more wall radiator units will be installed in the restrooms and the nursery. Heating the Social Hall is more complicated and we are considering our options and the costs entailed. Meanwhile, we still have the electric baseboard heaters. If you should use them, it is imperative they be turned off when you're done!

> **Workday is Saturday October 24 - SAVE THE DATE!**

The job list is forming for the WMPC / LCYC Workday on **Saturday, October 24th**. Please join your church family in caring for our building on this day between 8:00 a.m. and 3:00 p.m. Some projects can be done even before workday. A sampling of jobs:



- affix protective pads on the legs of the folding tables
- salvage and repair the mechanisms of several 8' dining tables
- remove dead shrub along Calvert Place
- paint lines on the parking lot

Will you help provide lunch for our volunteers on Workday? Do you want a task to do on your own schedule? Do you have a suggestion of areas needing attention? Please contact June Eakin (301-384-3170). Look for the sign-up sheet and complete job list coming out after October 5.

B&G meets the first Monday of each month. If you have a concern, a compliment, or expertise to share, please join us on Mondays or contact any member of our team: June Eakin (chair), Susan Kline, Robert Vieira, Natalie Thompson, Steve Dunn, and Harry Trout.

With cooler weather coming, please remember to close windows if you open them. Security is everyone's responsibility – please lock up when you leave the building!

In conjunction with the Environmental Stewardship Team, plans are moving along for conservation landscaping on our property, especially near the new tower. Talk with Barbara Shaw for more details on this.

> **Elevator update:** Our modern elevator has many safeguards and is computer controlled, sometimes leading to “out of service” conditions on the weekends. Your patience during these times is appreciated as we continue to learn how to keep it in service without calling the elevator technicians after regular business hours. If you notice any problems, please notify the church office right away!

PRESBYTERIAN WOMEN



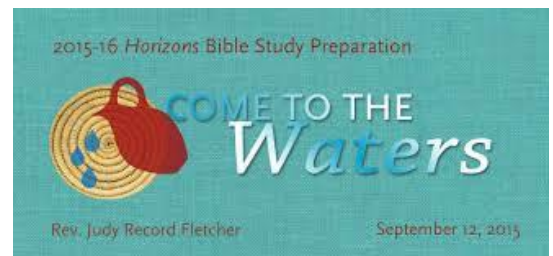
Autumn leaves are falling and PW is in the thick of the start of our 2015 season. We are hopeful that all women at Warner will find items and activities of interest among the information shared below. As always, should you have suggestions for new endeavors, please contact any member of the PW Coordinating Team: Sue Burns, Lora McGlade, Karen Cook, JoEllen LaPrade, Lisa Smeallie, June Eakin, Kay Gorman and Charity Singletary.

JOY CIRCLE

Several Warner Women gathered in the library for Joy Circle on the second Tuesday in September and discussed waters of chaos, goodness of God, taking care of creation, and Sabbath rest. They listed ways the Bible study can help all of us to step away from “busyness” and refocus on God: reading the lesson each month, putting the Circle meeting dates on our calendars, and praying for Circle members. “How can a day be transformed into moments of holy encounter, used to take in the goodness of everything God has made?”



We encourage all women of Warner to identify a time or activity you do daily (look at watch, brush teeth, eat a meal, etc.) and, each time you participate in this activity, pause and give thanks for the creation that is around you. We will share our experiences on **Tuesday, October 13th** when we’ll cover the second lesson in Horizons Bible Study, **“Come to the Waters.”** We will consider the meaning of baptism - for Jesus, the early



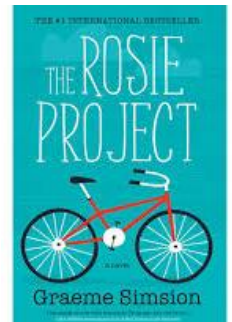
church and for our lives. Susan Kline will lead our lesson. Study books are \$9.50 each. Please contact June, if you have not already done so, and plan to buy a study book.

REFLECTIONS CIRCLE BEING REVIVED

The first meeting of this circle will be held **Sunday, October 11th** at 9:30AM, location at Warner to be announced. The group will follow the 2015-16 Horizons Bible study, **“Come to the Waters.”** Please contact Lora McGlade (lmcglade@frontlinemedcom.com) if you have any questions and to obtain your book if you want to have it before the first meeting.

BOOK GROUP: After a wonderful kick-off in late September, we are on to our next book for October... **“The Rosie Project”.** We will be discussing this book on **Tuesday, October 27th** in the Common Room at **7:30 PM.** If you would like to bring a snack or beverage, that would be great.

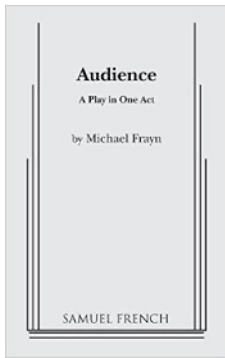
From the publisher, “Meet Don Tillman, a brilliant yet socially challenged professor of genetics, who’s decided it’s time he found a wife. And so, in the orderly, evidence-based manner with which Don approaches all things, he designs the Wife Project to find his perfect partner: a sixteen-page, scientifically valid survey to filter out the drinkers, the smokers, the late arrivers. Rosie Jarman is all these things. She also is strangely beguiling, fiery, and intelligent. Don is particularly suited to help Rosie on her own quest: identifying her biological father. When an unlikely relationship develops as they collaborate on the Father Project, Don is forced to confront the spontaneous whirlwind that is Rosie—and the realization that, despite your best scientific efforts, you don’t find love, it finds you...” Please join us for our discussion.



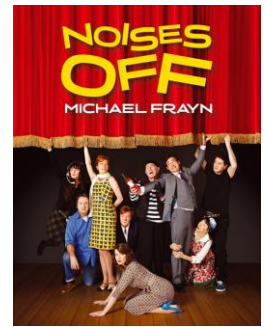
FALL PW ACTIVITIES:

PW is excited about the annual MUM Gala that will take place at the Silver Spring Civic Center from 7-9 PM **Saturday, October 17th**. The purpose of this gathering is two-fold: to celebrate the important work of MUM and to encourage those attending to provide their support. If you are planning to attend, please contact Lora McGlade to RSVP – at lmcglade@frontlinemedcom.com or call 301-754-0245 – so those preparing for this event can plan accordingly.





We encourage all Warnerites and their friends to support Albert Einstein High School S.T.A.G.E. , which will be presenting a double bill of deliciously silly British farces by Michael Frayn. Performances of “Audience” and “Noises Off” will begin at 6:45 p.m. on **November 5, 7, 13 and 14, and there will be an after-school matinee of “Noises Off” on November 6.** Contact Sue Burns if you have any questions – a number of members of PW are planning to attend.



EQUAL EXCHANGE / FAIR TRADE COFFEE: Stay tuned for more information regarding PW soliciting coffee orders via email. We have received a new catalog and hope to include orders for tea as well. Look for information in the Warner Weekly and the Sunday bulletin soon regarding how to place orders. We include a slight mark-up as a way to support local PW mission. Let us know if there are other Equal Exchange products you would like to order.

ANOTHER FALL PW ACTIVITY



Weather permitting, PW CT is planning to participate in **The Underground Railroad Experience Trail** hike in Sandy Spring on **Saturday, October 31st** that ... “commemorates the involvement of Montgomery County residents in the Underground Railroad and celebrates the Quaker heritage and traditions of Sandy Spring. The guided hike lasts 2.5 hours and is provided by talented volunteer ‘conductors’ who lead groups on a simulated Underground Railroad experience covering 2 miles from Woodlawn Manor Cultural Park along a wooded, natural surface trail to the historic Sandy Spring, then back to the park. Hikers learn about techniques that ‘freedom seekers’ used to elude trackers, find food, and navigate their way North to freedom. The Underground Railroad Experience Trail is part of the National Park Service National Underground Railroad Network to Freedom program.” After enjoying a morning of learning, nature, and exercise, we hope to gather for lunch at a restaurant in that area. **Please contact Sue Burns by October 23 if you are interested.**

LOCAL PW MISSION SUPPORT NEEDED!

Just as a reminder to all, PW's budget continues to be derived 100% from your donations. You can you help Warner PW with its continued efforts to support local mission by donating directly or by ordering Equal Exchange coffee or other items offered. We would like to not only sustain but grow our local mission projects such as providing hygiene items to the women at Rainbow Place or donations to MUM or Courtney's House.

--Submitted by Sue Burns

ADMINISTRATION & FINANCE

CONTRIBUTION STATEMENTS

By now, you have hopefully received your statement of contributions for January through August collections. Please contact Sharon Allen (301-213-4654; llorracs@hotmail.com) if you did not receive a statement and would like to have one, or if any information is missing from, or incorrect on, your statement. Thank you to those who have already responded—this greatly helps us all to have accurate records, and helps us figure out how we might change our procedure to keep mistakes at a minimum.

Thank you! -- Sharon Allen

SPECIAL NOTE

“TOWN OF KENSINGTON” POSTER SALES BENEFIT NOYES LIBRARY

A charming map of the Town of Kensington by local artist Jim Haynes is now available on sale. The Town commissioned the 22” x 28” illustrated color poster, which depicts streets, buildings, and green space in the Town of Kensington and environs. Proceeds from sales of the poster are being donated to the Noyes Children's Library Foundation.

Currently, the posters are for sale (\$5 each) at the antique row bookshop next to the Exxon service station on Howard Avenue. There are 500 copies, so get yours soon! For more information on the Noyes Children's Library Foundation, visit <http://noyeslibraryfoundation.org>.

WARNER PEOPLE

OUR STEPHEN MINISTRY PROGRAM OFFERS A CONFIDENTIAL “EAR” FOR INDIVIDUAL NEEDS

Are you, or someone you know and love, experiencing a burdensome or distressing condition? Is it affecting health or relationships with family and friends? Our Stephen Ministers can help. For more information about this confidential, Christian care program, please contact Barbara Jaquette (301-593-2875) or Rev. Hill at the church office (301-949-2900).



OCTOBER BIRTHDAYS

- 2 Alison Heafitz
- 6 Benjamin Bresee, Max Kuzmyak
- 8 Phil Och
- 9 Michael Carlson
- 17 Lara Brodsky
- 19 Katherine Locher, Daniel Zimmerman
- 21 Mark Bocchetti
- 23 Lisa Smeallie
- 24 Alex Bannon, Chris McGrath, Brian Whiteman
- 25 Jim Bresee, Paula Simenauer
- 28 Natalie Thompson, Harry Trout
- 29 Ila Trautvetter, Kelsey Moody

NEXT MEMO ISSUE

Please submit articles and notices for the June issue of the Warner MEMO by **Wednesday, October 20**. To all of our contributors: You may send your material via disk or typed hardcopy to the church office, or via e-mail to memo@warnermemorial.org... and we thank you for your contributions!

Warner Memorial Presbyterian Church

10123 Connecticut Avenue

Kensington, MD 20895

301-949-2900

FAX 301-933-7704

Home Page <http://www.warnermemorial.org>

- Please see bulletin boards outside the Main Office -

Pastor: Rev. Kirby Lawrence Hill

Director, Youth & Education: Jan Moody

Music Director: Peter Smeallie

Organist: Sungho Paik

Director, Learning Center for Young Children: Karen Murphy

301-949-2933

Administrative Assistant: Dina Bickel

Stephen Ministry Contact: Barbara Jaquette

301-593-2875

Pastoral Counseling: Cindy Stauffer

1-888-626-2273

MEMO Editors: Tiff Carroll & Sharon Allen

MEMO e-mail: memo@warnermemorial.org